

## TANGO ACE 121, Steamair



---

### Ref602741 (ACE121SAUL)

Super Automatic Espresso Machine

- 1 Group
- 2 Grinders
- Cappuccinator - Steamair - Mitigated Hot Water
- 208-240V 1N 60~Hz
- UL/NSF Certified
- Shiny Black

### General Features

The Tango® Ace impresses its users with an exceptional result in every cup, and the quality of its equipment makes it a highly reliable choice for demanding professional use.

The Tango® Ace fitted with a 7 inches touchscreen, offers a 48 drinks menu, all customizable. Milk-based drinks can be easily prepared with the Cappuccinator device or the Steamair milk auto-frother to process fresh milk into specialty coffee drinks as cappuccino, latte, mocha...

# TANGO ACE 121, Steamair

## Main Features

- Auto cleaning program.
- 1 group full-automatic machine.
- 6.5 liter steam/coffee boiler.
- The super automatic coffee machine Tango® Ace impresses its users with an exceptional result in every cup, and the quality of its equipment makes it a highly reliable choice for demanding professional use.
- The Tango® Ace comes in 3 different colors: shiny white, glossy black and brushed stainless steel, fitted with a new 7" color touch screen user interface. This full automatic coffee machine has a 48 drinks menu, all customizable and comprehensive with the addition of the Cappuccinatore device to process fresh into specialty coffee drinks as cappuccino, latte, mocha...
- Programmable water and steam.
- Tango Cappuccinatore device with double feature L: for hot milk and C: for foam by air injection.
- Delivery Capacity: Espresso 40ml: 220 cups/h Lungo 100ml: 150 cups/h Hot Water: 30 L/h Cappuccino 100ml: 170 cups/h Latte 100ml: 150 cups/h

## Construction

- PID (proportional-integral-derivative) Temperature control: a precise controller algorithm system that gives consistency and accuracy to brewing temperature management system.
- 2 coffee grinders (1 x 1,7 kg & 1 x 1,2 kg coffee hoppers).
- LCD Touchscreen.

## Optional Accessories

- KIT OF RAISED 3" FEET PNC 871041 ☐

# TANGO ACE 121, Steamair

## Electric

Supply voltage: 208-240 V/1 ph/60 Hz

Electrical power, max: 5.5 kW

Plug type:

## Water:

Cold water temperature  
(min/max): 5 / 60 °C

## Key Information:

External dimensions,  
Height: 30 3/16" (846 mm)

External dimensions,  
Weight: 201 lbs (103 kg)

Net weight: 201 lbs (103 kg)

Shipping width: (1100 mm)

Shipping depth: (750 mm)

Shipping height: (840 mm)

Shipping weight: lbs (122 kg)

Shipping volume: 0.7 m<sup>3</sup>

## Certifications



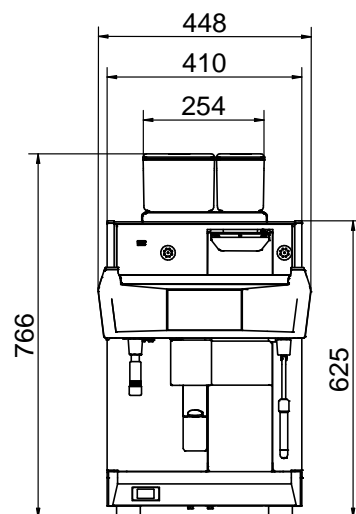
The company reserves the right to make modifications to the products without prior notice. All information correct at time of printing.

2025.07.01

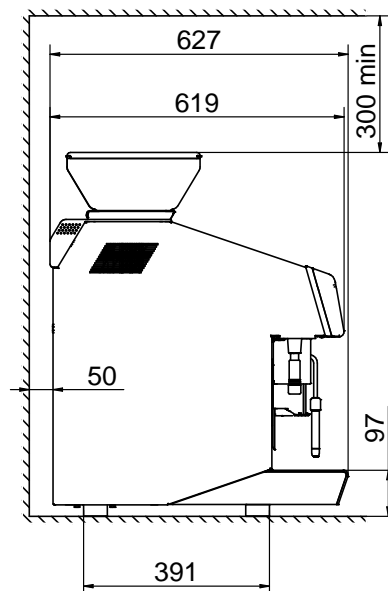
Part of



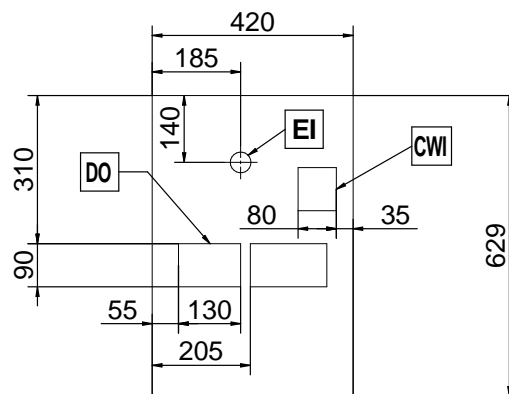
Electrolux  
Professional  
Group



Front



Side



Top

# UNIC